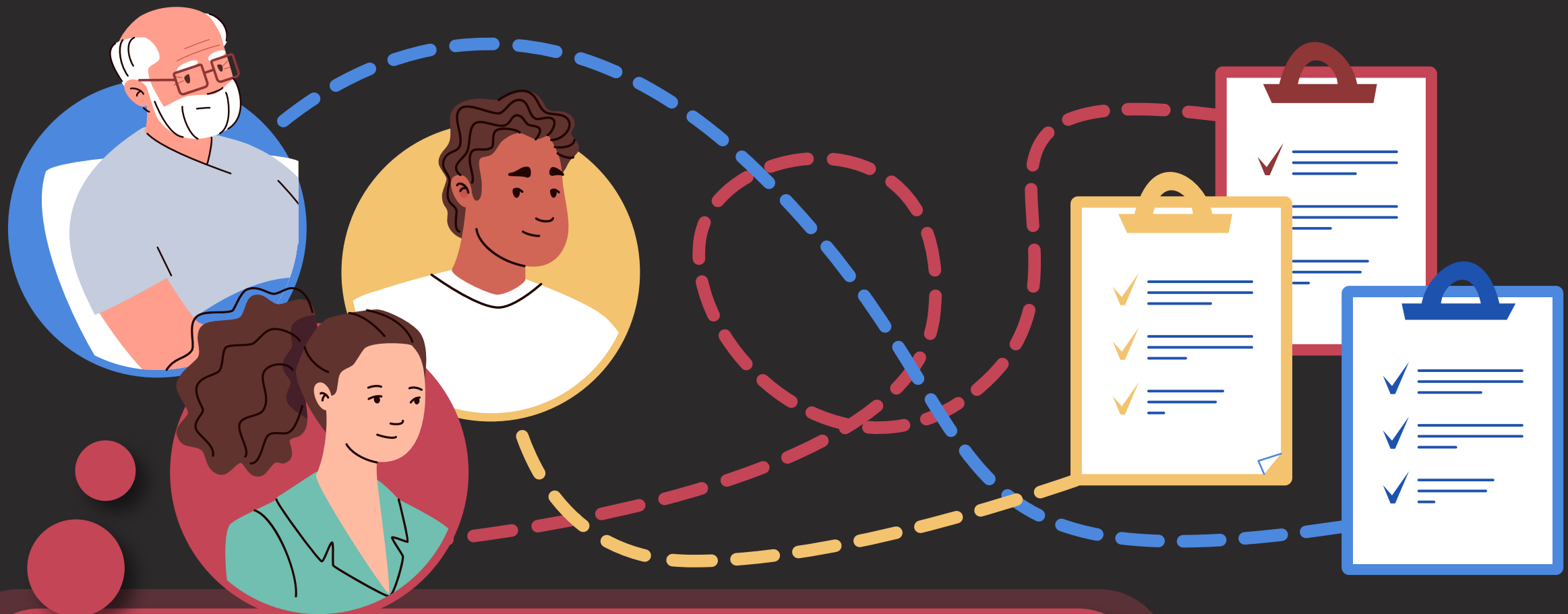


KNOW AML

The myeloMATCH trials: *An overview*



What is myeloMATCH?

MyeloMATCH is an ongoing program in the US and Canada for patients with acute myeloid leukemia (AML). The **screening trial** aims to match patients with a **clinical trial** in the myeloMATCH program, testing an appropriate treatment for their type of AML.

After a diagnosis of AML, it's important that patients start treatment **quickly** but also that they receive the **most suitable treatment for their specific type** of AML.¹

Why are the myeloMATCH trials being run?

Genes are sections of our DNA that give instructions for making proteins, which enable the body to function properly.

Genetic mutations are when part of a gene is damaged or in the wrong place. This changes the gene's instructions, meaning the proteins may not work properly.



Some genetic mutations can contribute to AML.

Targeted therapies – a type of drug – work better when a patient has a specific mutation.

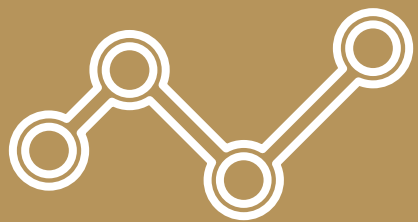
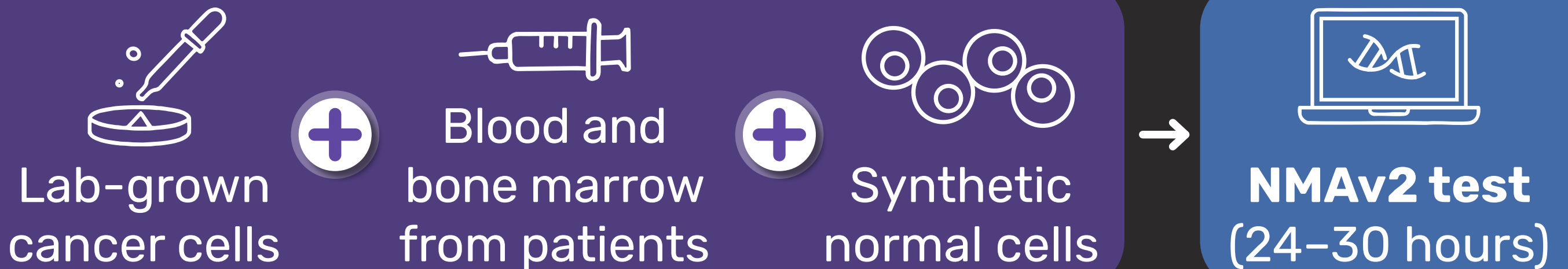
Delays in treatment can result in poorer outcomes.

Tests to diagnose these specific mutations can take **5-14 days or longer.**

The myeloMATCH program aims to match patients with a clinical trial of a targeted therapy quickly. A screening test, called **NMAv2**, is used to identify a patient's specific mutation, and this can take 48 hours to give a result.

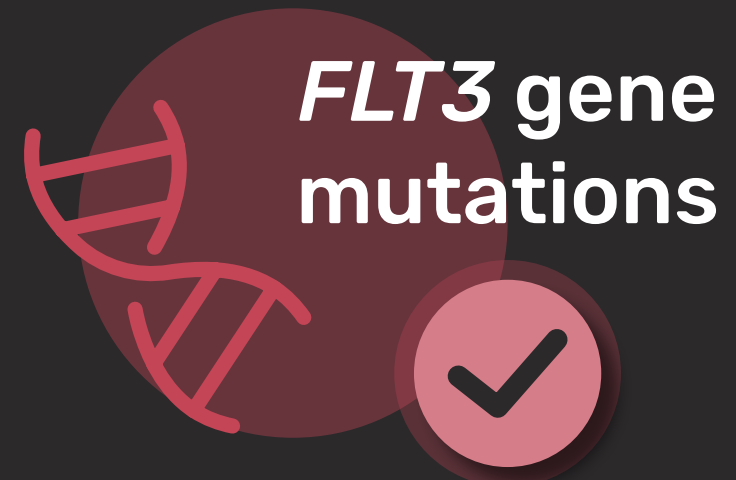
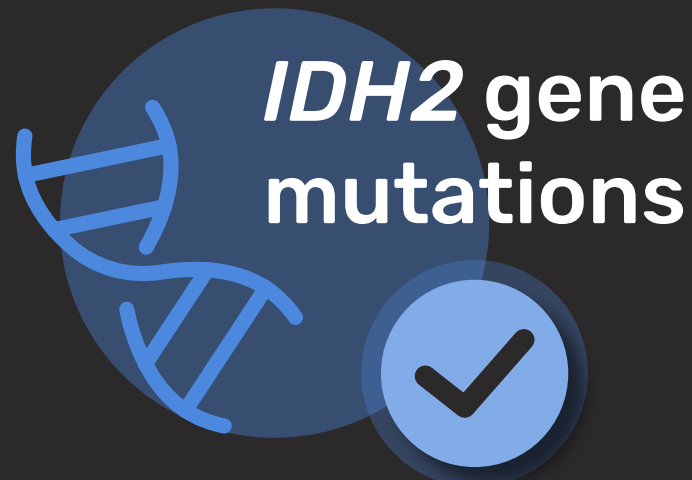
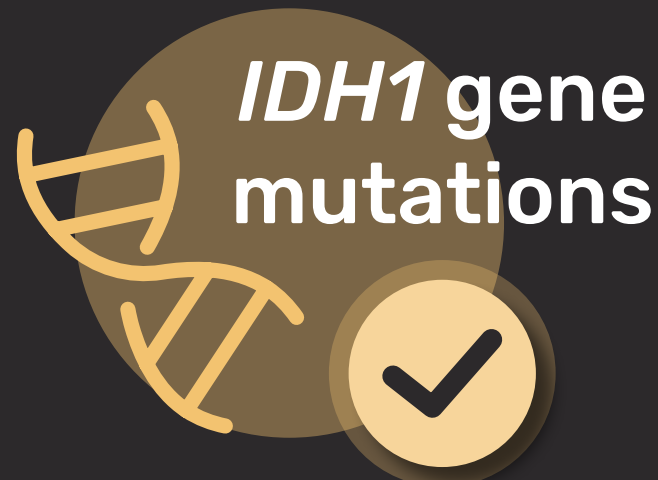
What does the screening test look for?

To make sure the NMAv2 screening test would work, researchers used it on different types of cells with AML mutations that patients in the myeloMATCH trials might have:¹



Researchers then did statistical tests on the NMAv2 results, which showed that NMAv2 can rapidly and accurately pick up genetic mutations in AML.¹

For example, mutations detected by the NMAv2 test include:



What happens after the myeloMATCH screening test?



After a specific AML mutation is identified...



Patients are matched to a trial of a treatment most suitable for their mutation.

If there is not a suitable myeloMATCH trial, patients receive standard treatment. There may be a myeloMATCH trial that is more appropriate at a later stage of treatment.

After initial treatment, patients may have the screening test again.



If initial treatment has reduced their disease, there may be another suitable myeloMATCH trial that they can take part in.

What will outcomes of the myeloMATCH program mean for patients?

Following a diagnosis of AML, it is important that patients start treatment quickly and that the treatment is the most appropriate for their specific type of AML.



↔ The myeloMATCH program aims to personalize AML treatment by matching patients quickly to an appropriate clinical trial testing a therapy targeted to their specific genetic mutation.

✓ The screening test used in myeloMATCH can accurately and rapidly detect genetic mutations associated with AML, so patients can then take part in a treatment trial that is appropriate for them.

↻ Following initial myeloMATCH treatment, patients may then be eligible to take part in further myeloMATCH trials.

References:

1. Yeung CCS, et al. *J Mol Diagn.* 2025;27(8):783-795.
2. SWOG Cancer Research Network. myeloMATCH Overview. <https://www.swog.org/myelomatch-overview>. Accessed Sept 30, 2025.

This educational resource is independently supported by Thermo Fisher. All content was developed by SES in collaboration with an expert ambassador group. Funders were allowed no influence on the content of this resource.

**KNOW
AML**

Know-AML.com

Providing patients and caregivers
with the information they need
to deal with acute myeloid leukemia.

Brought to you by
 **SES**